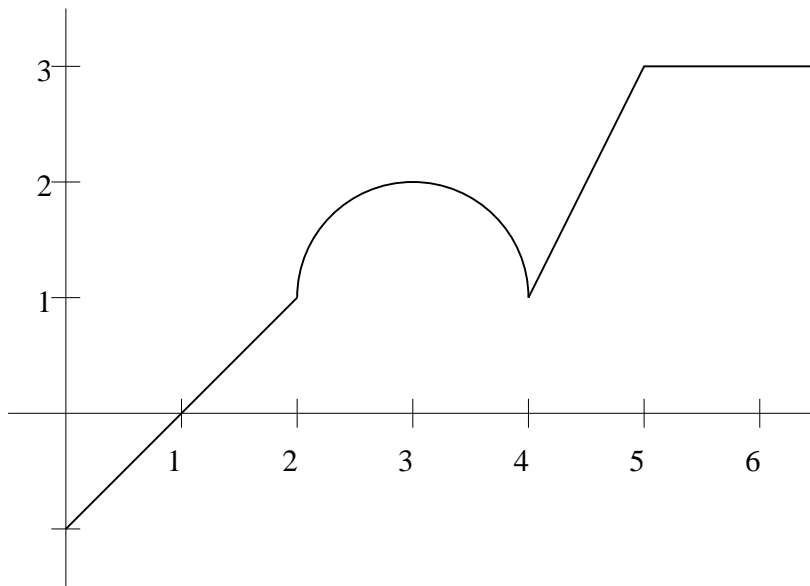


Quiz #3

Quiz Section: _____

SHOW YOUR WORK

1. (5 points) The graph of the function $f(x)$ given in the figure consists of line segments and a semicircle. Let $g(x) = \int_0^x f(u) du$.
- (a) Compute $g(2)$ and $g(5)$
- (b) What is the maximum value of $g(x)$ on the interval $(0, 6)$?



2. (5 points) Compute the definite integral $\int_2^e \frac{1}{x\sqrt{\ln x}} dx$