

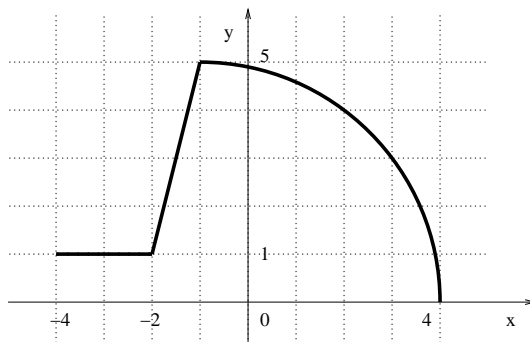
Math120U, Quiz 2, 4/14/2004

Name \_\_\_\_\_ Student number \_\_\_\_\_

No notes allowed though you may use a non-graphical calculator. 15 minutes for the quiz.

1. [13 pts]

(a) Write down the equations for the multi-part function  $y = f(x)$  with the graph shown below. The domain of the function is  $\{x \mid -4 \leq x \leq 4\}$  and the graph is composed with 2 line segments and a quarter of a circle of radius 5.



(b) Also write down the range of this multi-part function:  $R =$

2. Find the natural domains of the following 2 functions. [4 pts]

(a)  $y = \frac{x}{\sqrt{x^2 + 5}}$

(b)  $y = \frac{1}{(4 - x)^2}$

3. Answer YES or NO under each picture whether the curve is the graph of some function. [3 pts]

