

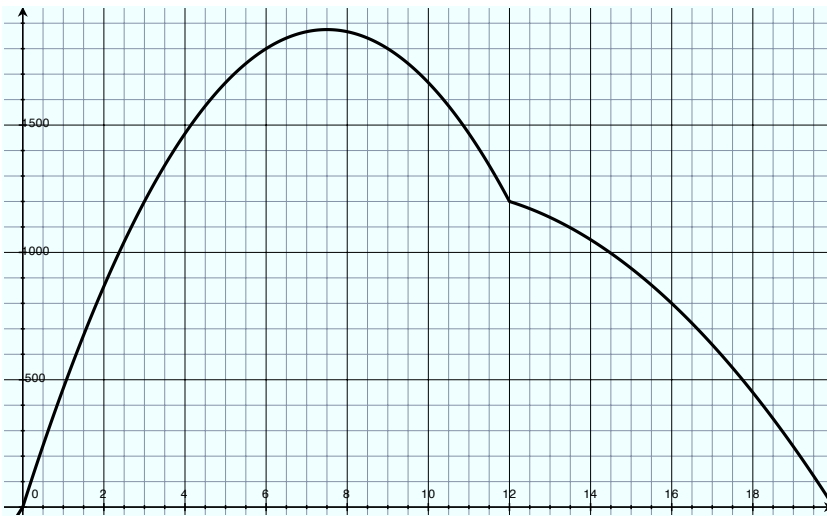
Math 120 A, B - Winter 2010  
 Final Exam  
 March 13, 2010  
 Answers

1. 1.1292 hours
- 2.

$$\text{area}(x) = \begin{cases} 4x & \text{if } 0 \leq x \leq 3, \\ 12 + 6(x - 3) & \text{if } 3 \leq x \leq 4, \\ 18 + \frac{1}{2}(x - 4)(6 - 3(x - 6)) & \text{if } 4 \leq x \leq 6 \end{cases}$$

3. (a)

$$M(p) = \begin{cases} p \left( 500 - \frac{100}{3}p \right) & \text{if } 0 \leq p \leq 12, \\ p(250 - 12.5p) & \text{if } 12 \leq p \leq 20 \end{cases}$$



(b)

(c) She should charge \$7.50 per ticket to make the most money.

4. (a)  $x = 32.5949 \cos\left(\frac{53}{32}\pi - \frac{\pi}{32}t\right), y = 32.5949 \sin\left(\frac{53}{32}\pi - \frac{\pi}{32}t\right)$  (b) 58.931 m.
5. 1.0193 inches
6. 5.1337 hours
7. The trees are 33.62 feet apart.