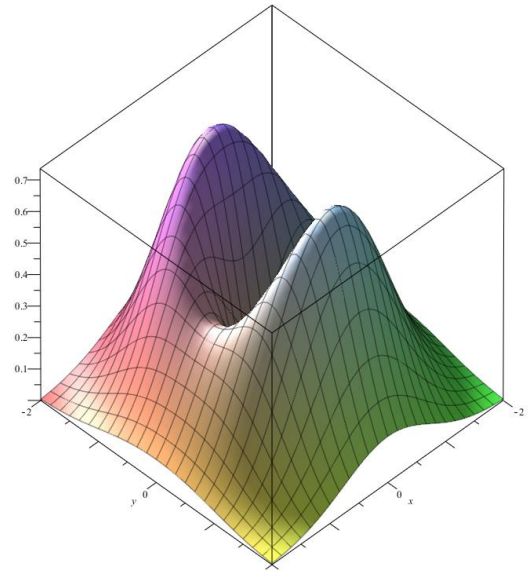
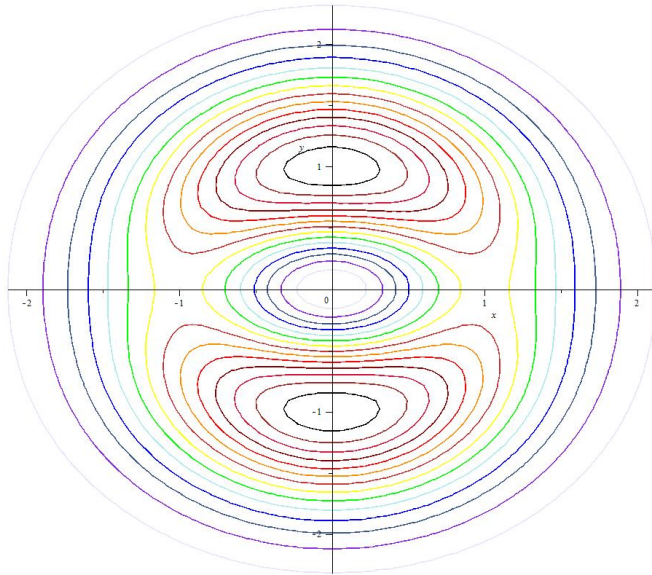


## Math 136, Spring 2015, Suggested Problems for Week 10

1. Section 16.5, Problems 5, 15, 27, 32(c), 34. Below are the level curves and the graph of the function in Problem 34. The level curves are color coded with increasing values from lavender to dark brown.



2. Section 16.6, Problems 3, 5, 13, 29, 32, 35.
3. Section 17.1, Problems 3, 17.
4. Section 17.2, Problems 19, 21 (Here the idea is NOT to use iterated integrals as in the next section. Do not dwell too much on partitions in this section.)
5. Section 17.3, Problems 11, 13, 17, 19, 21, 23, 31, 35, 41, 47.
6. Section 17.4, Problems 5, 7, 11, 15 (remember there are three important circle equations in polar coordinates), 17, 19, 29, 32, 34.
7. Section 17.5, Problem 5.